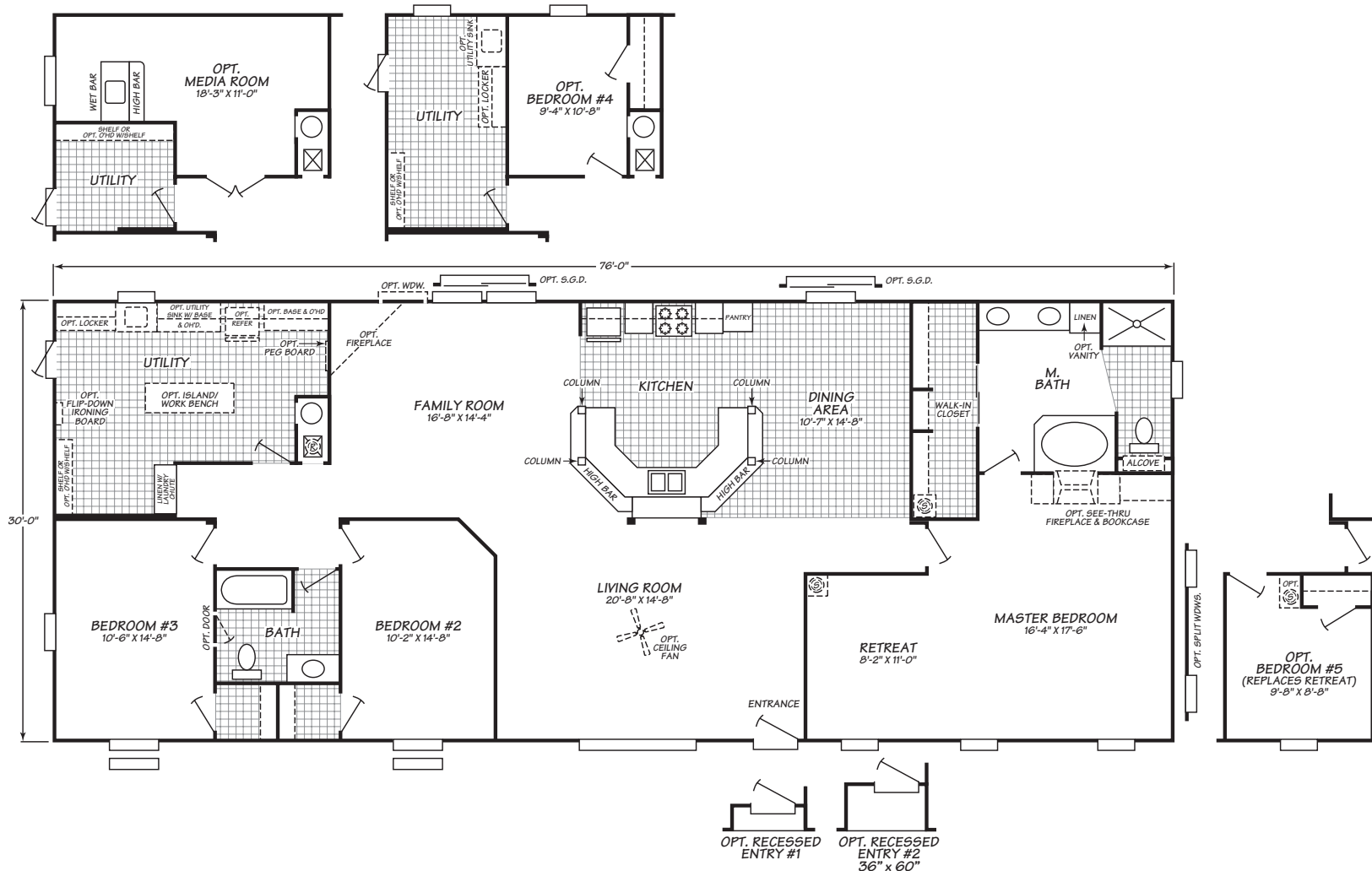


Eagle Trace Series Model 0763A

3 Bedrooms • 2 Baths • 2,280 Square Feet



Windows shown reflect standard aluminum windows. Selection of optional thermal pane (vinyl) windows may affect the size and number of windows.

Fleetwood Homes reserves the right to change colors, prices, specifications, models, dimensions and materials without notice. Rendering and diagrams are meant to be representative and, in keeping with Fleetwood's policy of constant updating and improvement, may vary from the actual home. All dimensions are nominal and approximated. Square footage is measured from exterior wall to exterior wall, and is an approximate figure. Length indicated in floorplans is floor length only. The length of the hitch is not included. (Add four feet to arrive at transportable length.) Ask your retailer for specifics. PRICES AND SPECIFICATIONS SUBJECT TO CHANGE WITHOUT NOTICE OR OBLIGATION.

Interior

8' Flat Ceiling More spacious, appealing rooms and greater energy efficiency

5/16" Gypsum Wall Panels Easy to clean and permeable for longevity

Luxurious 16 oz. Carpet with Rebond Carpet Pad High performance, trackless, and long wearing and carpet pad extends the life of your carpet

Durable Zargen Cabinet Drawer System Easy operation with low maintenance

30" Embossed Six Panel White Interior Doors Contemporary & stylish with easy to use fixtures, creates a designer home look

Vinyl Tile Entry Way Easy to care for, durable vinyl stands up to wear in this high traffic area and protects carpets

Decorative Glass Light Fixtures Durable and attractive, adds an appealing detail to room lighting

Ventilated Vinyl Coated Closet Shelving Keep clothing and personal items organized with easy to clean shelving

Mini-Blinds Stylish blinds provide total privacy and protect carpets from fading

Factory Select Decor Professionally designed and appointed with quality materials

Exterior

2X4" Marriage Walls Provides structural strength and integrity between home sections

36X80" House Type Front Door with Storm and Deadbolt For increased accessibility and security

Beautiful Vinyl Siding Low Maintenance for years to come

Composition Shingle Roof For low maintenance performance

2X4" Exterior Wall Frames, 16" on Center Superior structural strength – the standard in residential construction

2X6" Floor Joists Provides a stable foundation (24'/28' homes)

2X8" Floor Joists Stable, strong foundation for home structure and furnishings (32' homes)

OSB Floor Decking Structurally strong, warp resistant flooring is glued and fastened for maximum stability

36X80" Rear Door with Deadbolt For increased accessibility and security

White Aluminum Windows with Grids Add eye appeal with this traditional styling look

Bath

Easy Care Laminated Counter Tops For quick clean-up and a designer look

Porcelain Water Saver Toilets Durable and fashionable, water saver feature helps save on utility bills

Exhaust Fan For better air circulation

Glamour Master Bath With one piece 54" separate shower (model specific)

Towel Bars and Tissue Holders Ready to move in with the convenience of towel and tissue placements

36" High Countertops in Master Bathroom Contemporary styling and a full-height vanity bath mirror

60" Bathtub and Shower with One Piece Surround in Guest Bath Full-size, durable, attractive and easy to clean

Kitchen

Cityscape Cabinets Spacious, durable, and appealing design with a custom kitchen style

30" Overhead Cabinets Convenient, accessible storage with lined adjustable shelves for kitchen equipment & supplies

Drawers Over Doors Construction Efficient design enhances storage and keeps utensils close at hand

Whirlpool® Appliances Quality, dependability, and style—all backed by the Whirlpool warranty

Concealed Cabinet Door Hinges For a more residential look

Easy-Care Laminated Countertops For quick clean-up and a designer look

Shelf Over Refrigerator Make best use of space with extra kitchen storage

No-Wax Vinyl Floors Easy maintenance and choice of patterns

Stainless Steel Kitchen Sink Durable, stain resistant sink is chip proof with easy to use lever faucet

Crown Cabinet Molding in Kitchen Adds that touch of class of a well-designed home

Utilities, Safety & Energy

200 Amp Electrical Panel Box Designed and installed for safety, easy access and ample household capacity

40 Gallon Water Heater Abundant hot water supply for laundry, bath, and kitchen

Exterior Electric Outlets & Water Faucets Convenient power and water access for outdoor tools and yard care

Water Shut-Off Valves At All Toilets Quickly shut off water for repairs or in an emergency

Smoke Detectors with Battery Back-Up Protect every resident from fire danger and potentially get lower insurance rates

Porch Lights At Front and Rear Entries Added safety and security at night.

R14/R11/R11 Insulation Helps conserve energy

Utility Shelf Over Washer and Dryer Adds convenience when doing laundry

Options

Appliance Option Package Add or upgrade brand name appliances to suit any taste

Deluxe Carpet Upgrade Luxurious, heavier weight carpet in designer colors, meets all FHA specifications

Fireplace For added energy efficiency and cosmetic appeal

Molding Upgrade Package Upgrade enhances moldings throughout home

Entertainment Centers (Most Homes) Built-in cabinetry to house entertainment systems enhances custom home look

50 Gallon Water Heaters Abundant hot water supply for laundry, bath, and kitchen

Thermal Pane and Self Storing Storm Windows Tilt-in, easy to clean, Low E, thermalpane vinyl windows are standard on all models